

## 2 points actuator for zone valves

Art. 770



100% MADE IN ITALY 

**Function** Pintossi+C 2 points rotating actuator is the necessary tool to automatize the process of opening and closing for zone ball valves art. 772 - 773 - 774 - 776, in heating and cooling systems, in systems for drinking water and alternative energy, or in automation systems for civil use in general.  
The servomotor is complete with position indicator and auxiliary opening microswitch.

**Product range**

0077030230	230V 50/60 Hz
0077030024	24V 50/60 Hz

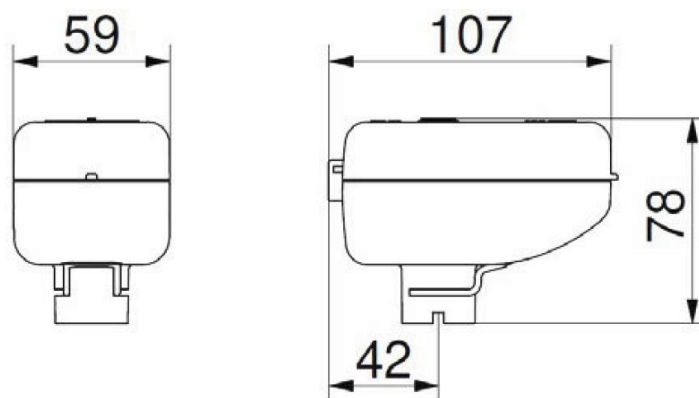
**Technical specifications**

Room temperature range:	5 - 50°C
Electric control:	<b>2 points</b>
Opening time:	45 sec
Function:	ON/OFF
Cable lenght:	80 cm
Rotation:	<b>90° clockwise</b>
Absorbed power:	3,9 VA
Position indicator:	Rotating arrow
Max noise:	40 dB (1m distance)
Room humidity:	Max 95% UR, absence of condensation
Protection degree:	IP54
Insulation class:	II – double insulation

**Materials**

Body:	Polyamide PA 6, 30% glass fiber
-------	---------------------------------

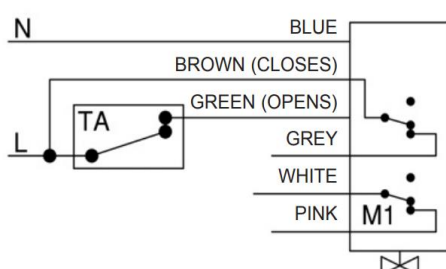
## Dimensions



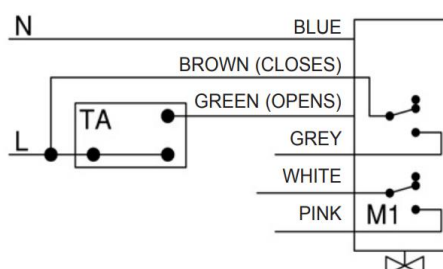
## Electrical connections

The diagram below shows an example of connecting the actuator to the power supply. In the case of 2 points control, several actuators can be operated by a single electric control.

OPENING POSITION

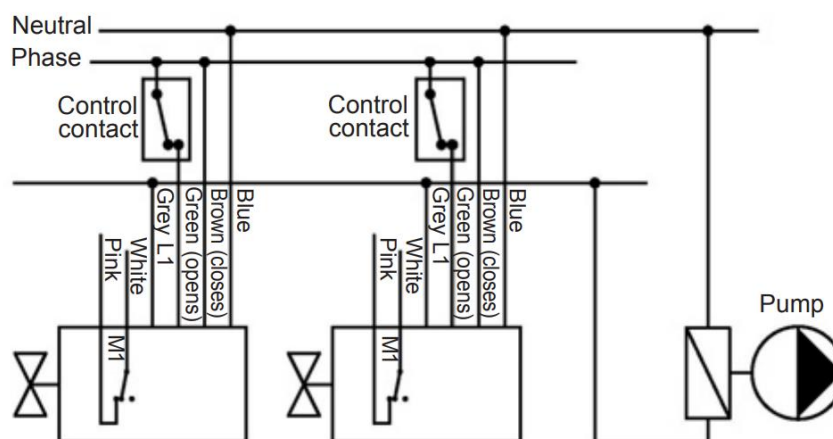


CLOSING POSITION



- GREY = OUTLET PHASE WITH OPEN VALVE
- TA = ROOM THERMOSTAT
- M1 = EXTRA MICROSWITCH FREE IN OPENING POSITION

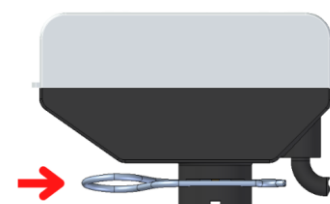
The diagram below shows an example of connection of the pump stop with two actuators.



M1 EXTRA MICROSWITCH FREE IN OPENING POSITION

## Installation

The servomotor can be installed very easily on Pintossi + C zone ball valves, simply by inserting the actuator pin into the valve housing. The coupling must then be fixed and completed using the steel clip, by inserting the two hands in the suitable seat, until the component is fully engaged.



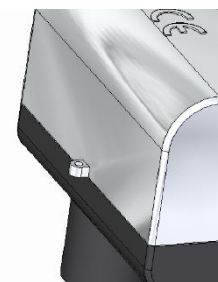
## Manual operation

The servomotor can also be used in manual mode, following the following instructions:

- Unhook the actuator from the body of the zone valve;
- Reinsert the actuator pin into the zone valve without pressing;
- Make the rotation in order to operate the valve manually, using the actuator as a knob.

## Sealing

The actuator is provided with a special hole to make a lead seal of the actuator with the valve's body, avoiding unwanted disassembling. Lead seal kit not provided.



## Installation

II The actuator can be installed in every position. It's anyway suggested to not install the actuator in upside-down position, due to condensation that may damage the internal electrical components.

When the valve is installed inside a small cabinet it is recommended to leave some space between the actuator and the frame of the cabinet in order to grant air circulation and avoid excessive temperature increases.

